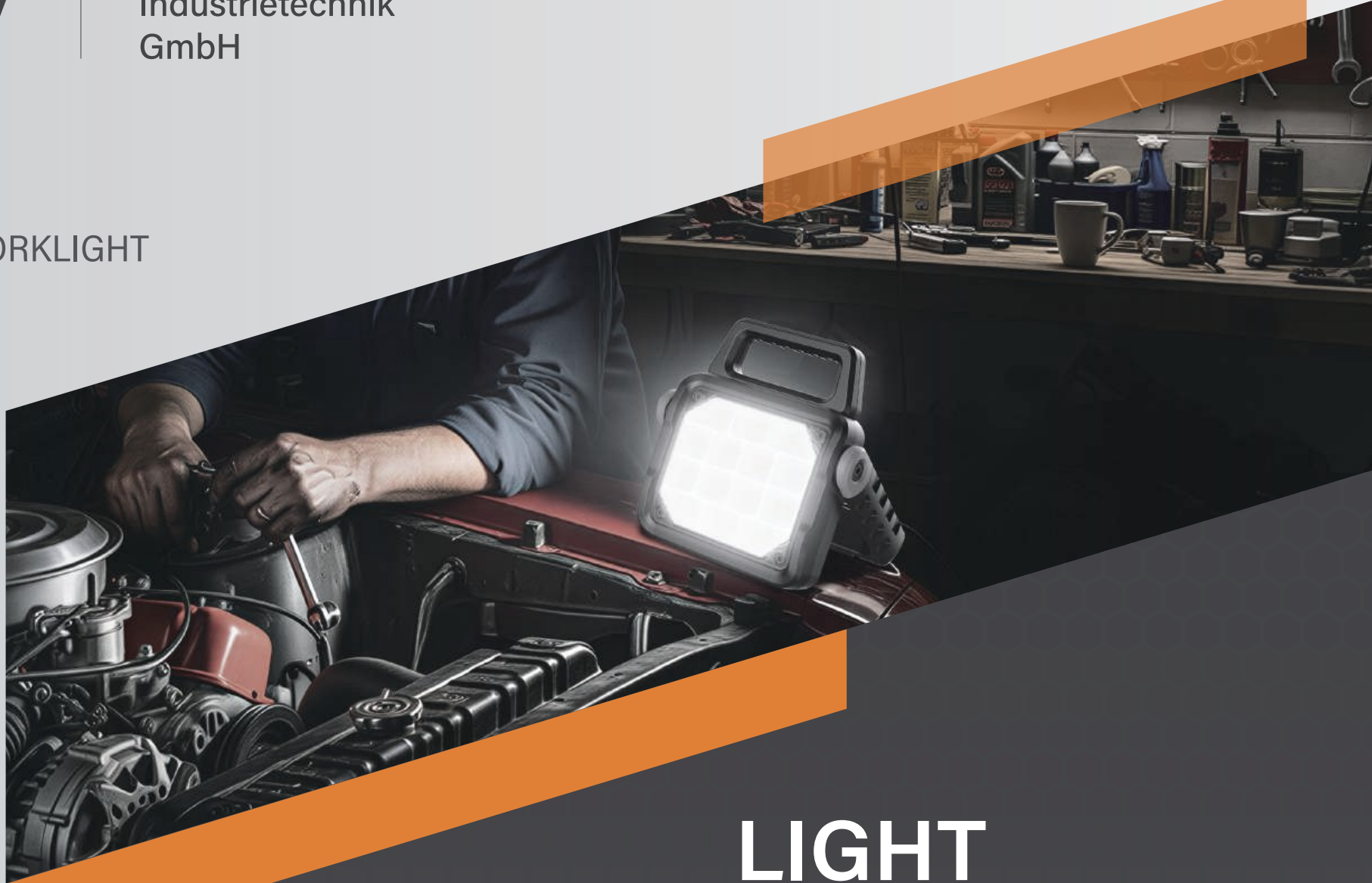




DLW
Industrietechnik
GmbH

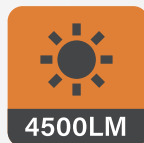
HEADLIGHT
FLASHLIGHT
HANDHOLD WORKLIGHT
WORKLIGHT



**LIGHT
BROCHURE**

WORKLIGHT




DLW-8240-40W
4500LM WORKLIGHT

4500LM

IP54

6500K

IK08


Light source:	40W SMD
Lumen:	4500lm
CCT:	6500K
Beam angel:	100°
Mode:	100%-75%-50%-25%-OFF
Battery:	18V
IP54; IK08	

DLW-9300-80W**10000LM FOLDABLE WORKLIGHT**

10000LM



270°



IP54



6500K



IK08



Light source:	80W
Lumen:	10000lm
CCT:	6500K
Beam angel:	270°
Mode:	100% -50%-OFF
Charging cable:	H07RN-3x1.0mm*5m
IP54; IK08	



DLW-8611-50W**5500LM WORKLIGHT WITH SOCKET**

Light source:	80W
Lumen:	5500lm
CCT:	6500K
Beam angel:	270°
Mode:	100% -50%-OFF
Charging cable:	H07RN-3x1.0mm*5m
IP54; IK08	

**DLW-8500-30W****3000LM 6600MAH WORKLIGHT**

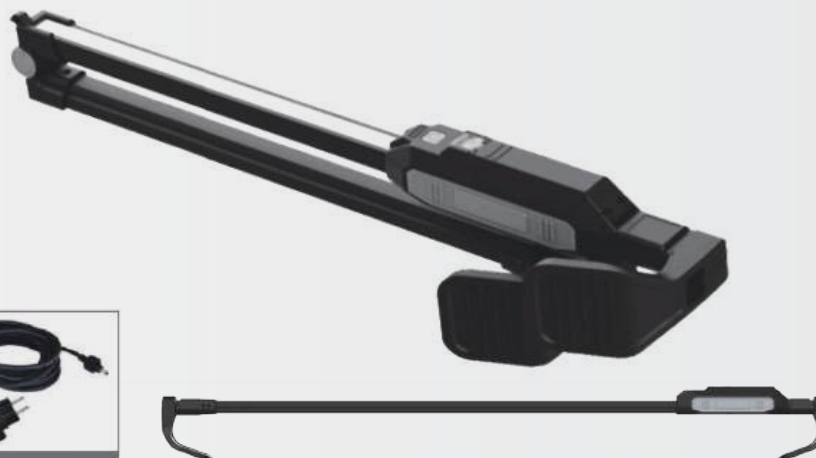
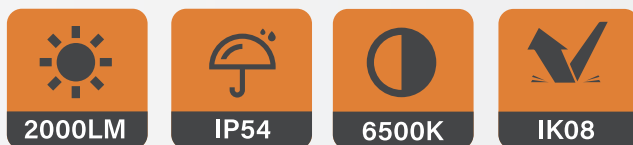
Light source:	30W SMD
Lumen:	3000lm
CCT:	6500K
Battery:	7.4V 6600mAh
Mode:	100%- 50%-OFF
Runtime:	3h, 6h
Charging time:	3h
Charging cable:	12V 1A with 1.8m cable

DLW-4101**6500LM 4000MAH WORKLIGHT**

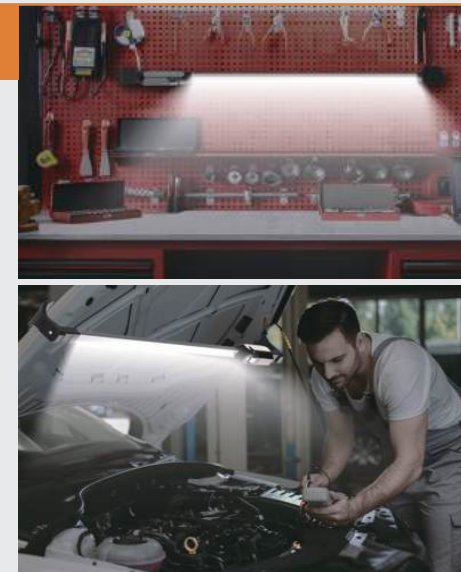
Light source:	SMD
Lumen:	1000lm(Low) - 2500lm(Mid) - 4000lm(High) - 6500lm(Turbo)
Battery:	14.8V 4000mAh
Mode:	ON-OFF Low-Mid-High-Turbo
Runtime:	3h(Low) - 2.5h(Mid) - 2h(High) -1.5h(Turbo)
Charging time:	6.5h
Charging Port:	Special Waterproof Plug

DLW-8900-30W**3000LM WORKLIGHT WITH SOCKET**

Light source:	30W SMD
Lumen:	3000lm
CCT:	6500K
Beam angel:	120°
Mode:	ON -OFF
Charging cable:	H07RN-F 3x1.5mm2 x5m
Socket:	1pc, max 3000W

DLW-4131-12V**2000LM 5000MAH FOLDABLE WORKLIGHT**

Light source:	24W SMD
Lumen:	2000lm
Battery:	3.7V 5000mAh / 12V mains
Mode:	100% - 50% -OFF
Runtime:	3h - 6h
Charging time:	2.5h
Charging cable:	H05RN-F 2x1.0mm2 x 5m



DLW-6957 7000LM 4000MAH TRIPOD WORKLIGHT WITH MAGNET



Light source:	SMD
Lumen:	1500lm, 3000lm, 7000lm
Battery:	7.4V 4000mAh
Mode:	Low-Mid-High-OFF
Runtime:	7h(Low)-3.5h(Mid)- 1.5h(High)
Charging time:	5h
Dimension:	800*100*95mm(Including tropod) 210*100*95mm(Lamp cap) Highest 1700mm



DLW-6967 1500LM 900MAH TRIPOD WORKLIGHT WITH MAGNET



1500LM



USB-C



IPX4



900MAH



IK07

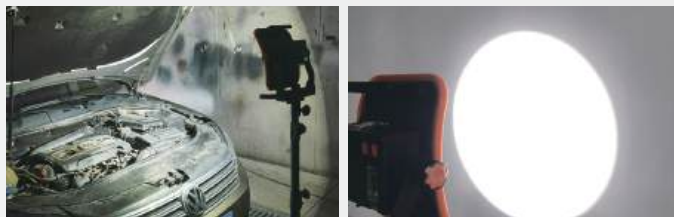


Light source:	SMD
Lumen:	1 Piece: Low 180lm - High 500lm 3 Pieces: Low 500lm - High 1500lm
Battery:	3.7V 900mAh
Mode:	Low - High - OFF
Runtime:	Low 5h - High 2h
Charging time:	5h
Charging Port:	USB-C
Dimension:	Dimension: 210*80*80mm



DLW-8210-30W**3000LM 4400MAH WORKLIGHT**

Light source:	30W COB
Lumen:	3000lm
CCT:	6500K
Beam angle:	120°
Battery:	7.4V 4400mAh
Mode:	100%- 50%-OFF
Runtime:	2h, 4h
Charging time:	3h
Charging cable:	H05RN-F 2x1,0mm2 x5m

**DLW-8220-30W****3000LM 4400MAH WORKLIGHT**

Light source:	30W COB
Lumen:	3000lm
CCT:	6500K
Beam angle:	120°
Battery:	7.4V 4400mAh
Mode:	100%- 50%-OFF
Runtime:	2h, 4h
Charging time:	3h
Charging cable:	H05RN-F 2x1,0mm2 x5m

**DLW-2001 LED STRIP LIGHT**

- Worklight Strip Light 230V, SMD2835, IP65,
- CCT: 4000K, 25m/ reel, Ra > 80,
- 800LM/M, 8W/M, 120 lamp /M,
- Transparent waterproof connector,
- minimum shear length: 1M
- 2-year warranty
- Packing: large reel + outer container
- With CE certification

**DLW-FP01-A00 LED STRIP LIGHT**

- Power: 115W
- Fuse: 250V 3A
- 200-240V
- Lumen: 640lm/m
- CCT: 3000K/5700K
- Weight: 4,5kg
- Temperature: -10~35°C



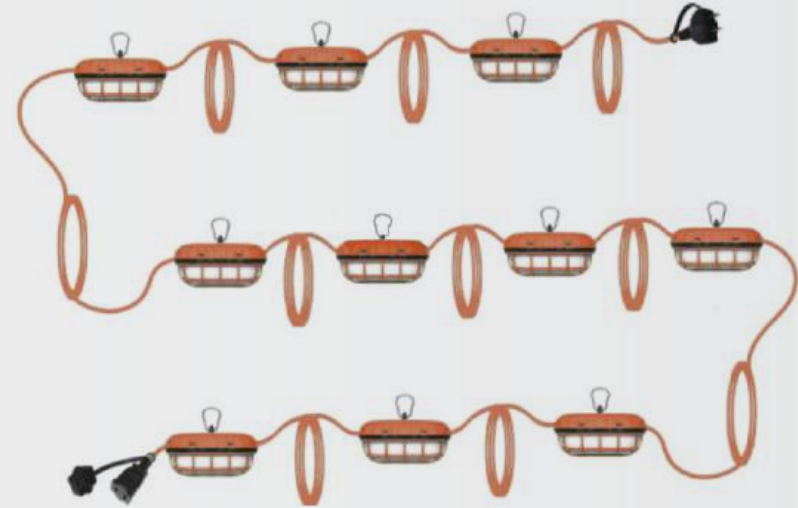
DLW-BWSTL-F1-5-D / DLW-BWSTL-F1-10-D

AC LINKABLE STRING LIGHTS

DLW-BWSTL-F1-5-D



DLW-BWSTL-F1-10-D



- Input: 230V AC
- Lumen: 125lm/W,
- CRI: 80
- IP65 (light only)
- Plug is only available in European type

ITEM	Length	Wire	Power
DLW-BWSTL-F1-5-D	15m	H03VV -F 3C*0.75mm ²	100W
		H05VV -F 3C*1mm ²	100W
DLW-BWSTL-F1-10-D	30m	H03VV -F 3C*0.75mm ²	200W
		H05VV -F 3C*1mm ²	200W

HANDHOLD WORKLIGHT



DLW-4130S

1200LM FOLDABLE WORKLIGHT

- 1200LM
- USB-C
- IP54
- 5000MAH
- IK08
- MAGNET



Light source:	5W*2 COB
Lumen:	1200lm
CCT:	6500K
Beam angel:	100°
Battery:	3.7V 5000mAh
Mode:	100%- 50%-25%-OFF
Runtime:	3h, 6h, 12h
Charging time:	4h



DLW-4025X-HG-COB FOLDABLE WORKLIGHT WITH MAGNET



Light source:	10W COB + Spot LED 1W
Lumen:	1000lm + 150lm
Beam angel:	120° + 20°
Battery:	3.7V 2500mAh
Mode:	100%- 50%-25%-OFF; ON-OFF
Runtime:	3h, 6h, 12h; 9h
Charging time:	3.5h
Charging cable:	USB-C



DLW-4080 1200LM WORKLIGHT WITH MAGNET



Light source:	10W + 3W COB
Lumen:	1000lm + 200lm
Beam angel:	90° + 30°
Battery:	3.7V 4400mAh
Mode:	100%~10%-OFF; ON-OFF
Runtime:	3.5h~35h; 8h
Charging time:	5h
Charging cable:	USB-C





DLW-8700C-10W 1000LM CLIP WORKLIGHT



Light source:	10W SMD
Lumen:	1000lm
Battery:	3.7V 2500mAh
Mode:	100% - 50% -25% - OFF
Runtime:	3h-6h-12h
Charging time:	3h
Charging cable:	USB-C

DLW-JF4024D-13 1200LM WORKLIGHT



Light source:	10W COB + 2W spot LED
Lumen:	1000lm + 200lm
Beam angel:	120° + 20°
Battery:	3.7V 2500mAh
Mode:	100%- 50%-10%-OFF; ON-OFF
Runtime:	3h, 6h, 12h; 16h
Charging time:	3,5h

DLW-8112-10W 1000LM WORKLIGHT

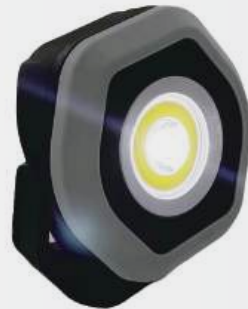


Light source:	10W COB
Lumen:	1000lm
CCT:	6500K
Battery:	3.7V 2500mAh
Mode:	100%- 50%-10%-OFF
Runtime:	3h, 6h, 20h
Charging time:	3h

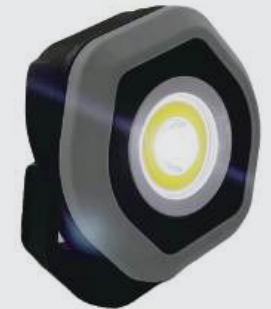
DLW-4081-WX 1300LM DUAL-LED WORKLIGHT



Light source:	10W COB + 3W spot LED
Lumen:	1000lm + 300lm
Beam angel:	100° + 20°
Battery:	3.7V 2500mAh
Mode:	100%- 50%-10%-OFF; ON-OFF
Runtime:	3h, 6h, 12h; 9,5h
Charging time:	2,5h

DLW-6016**700LM DUAL-LED WORKLIGHT**

Light source:	LED+COB	
Lumen:	Flood light: 700lm - 350lm - 120lm	Spot light: 250lm
Battery:	3.7V 2600mAh	
Mode:	spot- flood low - flood mid - flood high - off	Flood light: 10h - 4.5h - 2.7h
Runtime:	Spot light: 4h	
Charging time:	4h	
Charging cable:	USB-C	
IP65; IK07		

DLW-6017**1400LM DUAL-LED WORKLIGHT**

Light source:	LED+COB	
Lumen:	Flood light: 1400lm - 700lm - 350lm	Spot light: 400lm
Battery:	3.7V 5200mAh	
Mode:	flood: spot- flood low - flood mid - flood high - off	
Runtime:	Flood light: 7h - 4h - 3h	Spot light: 6.3h
Charging time:	4h	
Charging cable:	USB-C	
IP65; IK07		

DLW-FL06-A00**350LM MINI CLIP WORKLIGHT**

Lumen:	50lm-150lm-350lm
Mode:	low-mid-high-off 620nm~640nm red light
CCT:	4500K
Battery:	3.7V 800mAh
Runtime:	2~10h
Charging time:	3h
IP65; IK07	

DLW-8306**200LM WORKLIGHT WITH MAGNET**

Light source:	COB+ SMD
Lumen:	140lm(COB Low)-400lm(COB High) -200lm(SMD)
Battery:	3.7V 2200mAh
Mode:	Low - High - SMD - OFF
Runtime:	8h(COB Low) - 3h(COB High) - 5h(SMD)
Charging time:	2.5h
Charging cable:	USB-C
IP65; IK07	

DLW-PL30C1N001**470LM WORKLIGHT**

Light source:	15 x 0,3W Luxeon White LED
Lumen:	470lm
Battery:	1 x 3.7V 2000mAh 18650
Mode:	ON - OFF
Runtime:	2.5h
Charging time:	4h
Charging Por:	Micro USB
IP67; 2m drop	

DLW-PL30C2N001**1600LM WORKLIGHT**

Light source:	43 x 0,3W Everlight Cool White LED
Lumen:	High 1600lm - Low 485lm
Battery:	2 x 3.7V 2000mAh 18650
Mode:	Low - High - Off
Runtime:	High 2.5h - Low 8.5h
Charging time:	6h
Charging Por:	Micro USB
IP67; 2m drop	

DLW-8332**850LM POCKET WORKLIGHT**

850LM



IK07



1300MAH



USB-C



IPX4



Light source:	SMD
Lumen:	(top) high 850lm - mid 400lm - low 200lm - turbo 1500lm (front) high 250lm - mid 100lm - low 50lm
Battery:	3.7V 1300mAh
Mode:	Light press: Strobe Light Long press: Tubro mode Deep press cycles: SMD Low-Mid-High Rotary knob: SMD Lock-Low-Mid-High
Runtime:	(Top) High 0,5h-Mid 1h-Low 4h-Tubro 30s (Front) High 2,5h-Mid 5h-Low 10h
Charging time:	3h
Dimension:	131*30*20mm

DLW-8328**6000LM POCKET WORKLIGHT**

6000LM



IK07



2300MAH



USB-C



IPX4



Light source:	SMD
Lumen:	High 2500lm - Mid 1000lm - Low 500lm Dim 50lm - Turbo 6000lm
Battery:	Battery: 3.7V 2300mAh
Mode:	Mode: High-Mid-Low-off
Runtime:	High 1,5h-Mid 3,5h-Low 7h-Dim 15h
Charging time:	3h
Dimension:	134*24*31mm

HEADLIGHT



**DLW-3010****4W COB+SMD 500LM HEADLIGHT**

Light source:	4W COB + 2W SMD
Lumen:	300lm + 200lm
Battery:	3.7V 1200mAh + 3.7V 650mAh
Mode:	100% - 50% -OFF
Runtime:	3h-6h ; 3h-4h
Charging time:	3h
Charging Port:	USB-C
IP54; IK07	

DLW-PHM0M3A071**LED 250LM DUAL-POWER ADJUSTABLE HEADLIGHT**

Light source:	1 x Nichia 319 White LED + 1 x 0.5W Nichia Red LED
Lumen:	High 250lm - Mid 115lm - Low 10lm - red on 10lm - red flash
Battery:	3 x AAA Duracell Alkaline Batteries (include) 1 x 3.7V 800mAh Li-polymer (not include)
Mode:	white high - mid - low - red on - red flash
Runtime:	white high 6.5h - mid 13h - low 54h - red on 20h - flash 40h

IP64; 2m drop

DLW-PHW2C3A005**LED 400LM ADJUSTABLE HEADLIGHT**

Light source:	1 x SZ5-M4 Seoul Semi White LED
Lumen:	High 400lm - Mid 240lm - Low 140lm - Flash
Battery:	3 x 1.5V AAA Duracell Alkaline Batteries (include)
Mode:	white high - mid - low - red on - red flash
Runtime:	High 3h - Mid 5.5h - Low 8.5h - Flash 33h

IP64; 2m drop



DLW-PH0CM3A006

COB 450LM ADJUSTABLE HEADLIGHT



Light source:	1 x White COB LED+ 1 x Red COB LED
Lumen:	white: High 450lm - Mid 105lm - Low 20lm red: High 20lm - Mid 5lm - flash
Battery:	3 x 1.5V AAA Duracell Alkaline Batteries (include)
Mode:	white high - mid - low - red high - mid - flash
Runtime:	white: High 3h - Mid 12h - Low 50h red: High 10h - Mid 19h - flash 30h



DLW-PH82C1N012

LED 300LM ADJUSTABLE HEADLIGHT



Light source:	1 x Nichia 319 White LED
Lumen:	headlight: High 300lm - Mid 150lm - Low 30lm rear light: On - flash
Battery:	1 x 3.7V 2600mAh
Mode:	headlight high - mid - low - flash - rear light on - flash
Runtime:	headlight: High 11h - Mid 26h - Low 90h - flash 14h rear light: On 40h - flash 115h
Dimension	Headlight: 79mm x 44mm x 38mm Battery Case: 102mm x 38mm x 35mm



DLW-PHM0M1N083

LED 610LM DUAL-POWER ADJUSTABLE HEADLIGHT



Light source:	1 x Nichia 319 White LED + 1 x 0,5W Nichia Red LED
Battery:	1 x 3.7V 1000mAh (include) 3 x AAA Alkaline batteries (not include)
Lumen:	white: High 610lm - Mid 280lm - Low 30lm
Mode:	white high - mid - low - red on - flash
Runtime:	white high 3h - mid 7h - low 30h - red on 24h - flash 37h



DLW-PH82C3B008

LED 240LM ADJUSTABLE HEADLIGHT



Light source:	1 x Nichia 319 White LED
Lumen:	headlight: High 240lm - Mid 120lm - Low 50lm rear light: On - flash
Battery:	3 x 1.5V AA Duracell Alkaline Batteries (include)
Mode:	headlight high - mid - low - flash - rear light on - flash
Runtime:	headlight: High 8.5h - Mid 18h - Low 140h - flash 100h rear light: On 250h - flash 300h



DLW-6578

COB+SMD 400LM HEADLIGHT



Light source:	COB+SMD
Mode:	High - Low - COB - All ON - OFF
Dimension:	68*39*40mm 6.5h
	IPX4; IK07

3xAAA Battery Parameters	
Lumen:	400lm(High)- 120lm(Low) 200lm(COB)-470lm(ALL)
Runtime:	3x AAA 2h(High) 10h(Low)- 4h(COB)- 1.2h(ALL)

Lithium Battery Parameters	
Lumen:	400lm(High)-120lm(Low) 200lm(COB)-500lm(ALL)
Battery:	3.7V 1000mAh
Runtime:	2h(High)- 10h(Low) 4h(COB)- 1.2h(ALL)
Charging time:	2.5h

DLW-6713

COB+SMD 500LM HEADLIGHT



Light source:	COB + SMD
Lumen:	(COB)Low 150lm-Mid 300lm-High 500lm-(SMD)150lm
Battery:	3.65V 2200mAh
Mode:	(COB) Low-Mid-High -SMD
Runtime:	(COB)Low 15h - Mid 4h - High 30s - (SMD)7h
Charging time:	4h
Charging Port:	USB-C

DLW-6652

COB+SMD 500LM HEADLIGHT



Light source:	COB+SMD
Lumen:	(COB)Low 170lm-High 500lm -(SMD)150lm
Battery:	3.7V 2000mAh
Mode:	(COB)Low - High - SMD -OFF
Runtime:	(COB)Low10h - High3h - (SMD)8h
Charging time:	3h
Dimension:	101*53*25mm



DLW-6652 COB+SMD 400LM HEADLIGHT

- 400 LM
- sensing
- IPX4
- 3XAAA
- IK07
- USB-C

Light source:	COB+SMD
Lumen:	300lm(High) - 90lm(Low) - 180lm(COB) - 400lm(ALL)
Battery:	3 x AAA
Mode:	High - Low - COB - All ON - OFF
Runtime:	2h(High) - 12h(Low) - 4.5h(COB) - 1.2h(ALL)
IPX4; IK07	

DLW-6652 400LM HEADLIGHT WITH MAGNET

- 400 LM
- sensing
- IP65
- 2600mAh
- IK07
- USB-C

Light source:	2*LED
Lumen:	400lm-100lm-400lm-100lm-600lm
Battery:	3.7V 2600mAh
Mode:	Spot high- spot low- flood high- flood low- spot+flood Sensor
Runtime:	4h-18h-4h-18h-4h
IP65:	IP65
Dimension:	80,5*34*51,5mm

DLW-T9DY 20W 2000LM HEADLIGHT WITH MAGNET

- 2000LM
- IPX4
- 4000mAh
- MAGNET
- USB-C

Light source:	20W LED
Lumen:	2000lm-800lm-280lm-50lm-800lm
Battery:	21700 4000mAh
Mode:	Long press 100% which last 40s Single click 40%-15%-3%-off Double click for strobe
Runtime:	40s-5h-9h-50h-6.5h

DLW-T10DY 5W 500LM HEADLIGHT WITH MAGNET

- 500LM
- IPX4
- 700mAh
- MAGNET
- USB-C

Light source:	5W LED
Lumen:	500lm-150lm-15lm-230lm
Battery:	163400 700mAh
Mode:	Single click 100%-30%-5%-off Double click for strobe
Runtime:	1.5h-2.5h-23.5h-3.5h
Charging port:	USB-C

FLASHLIGHT



**DLW-ATOPC3C001****1000LM ADJUSTABLE FLASHLIGHT**

Light source:	1 x Cree XP-L2 V5 Cool
Lumen:	High 480lm - Mid 200lm - Low 50lm - Turbo 1000lm
Battery:	3 x 1.5V C Size Alkaline Batteries (not include)
Mode:	Turbo-High-Mid-Low-off-
Runtime:	High 21h-Mid 51h-Low 354h-Turbo 8,5h
Dimension:	Ø40mm x 239mm
IP66; 2m drop	

DLW-ATOPCIN040**920LM ADJUSTABLE FLASHLIGHT**

Light source:	1 x Nichia 519 White LED
Lumen:	High 400lm - Mid 170lm - Low 50lm - Turbo 920lm
Battery:	3.7V 2600mAh
Mode:	Turbo-High-Mid-Low-off
Runtime:	High 13.5h-Mid 28h-Low 130h-Turbo 6h
Charging time:	4h
Dimension:	Ø29mm x 141mm
Weight:	180g



DLW-ATOPC1N041 900LM ADJUSTABLE FLASHLIGHT



Light source:	1 x Nichia 519 White LED
Lumen:	High 400lm - Mid 170lm - Low 45lm - Turbo 900lm
Battery:	3.7V 2600mAh
Mode:	Turbo-High-Mid-Low-off
Runtime:	High 13.5h-Mid 28h-Low 130h-Turbo 6h
Charging time:	4h
Dimension:	Ø29mm x 149mm
Weight:	180g

DLW-ATN2C4A002 555LM ADJUSTABLE FLASHLIGHT



Light source:	1 x Nichia 319 White LED
Lumen:	High 330lm - Mid 165lm - Low 30lm - Turbo 555lm
Battery:	4 x 1.5V AAA Duracell Alkaline Batteries (include)
Mode:	Turbo-High-Mid-Low-off
Runtime:	High 4h-Mid 9h-Low 47h-Turbo 2.5h
Dimension:	Ø38mm x 129mm
IP66; 2m drop	

DLW-ATN2C2B003 480LM ADJUSTABLE FLASHLIGHT



Light source:	1 x Nichia 319 White LED
Lumen:	High 330lm - Mid 170lm - Low 30lm - Turbo 480lm
Battery:	2 x 1.5V AA Duracell Alkaline Batteries (include)
Mode:	Turbo-High-Mid-Low-off-
Runtime:	High 3.5h-Mid 7h-Low 35h-Turbo 2.5h
Dimension:	Ø29mm x 158mm
IP66; 2m drop	



480LM



2XAA



IP66



2m drop

DLW-AT0SC1N001 230LM ADJUSTABLE PENLIGHT



Light source:	1 x SZ5-M4 Cool White LED
Lumen:	High 230lm - Mid 80lm - Low 10lm
Battery:	3.7V 320mAh
Mode:	High-Mid-Low-off
Runtime:	High 2.5h-Mid 6h-Low 20h
Dimension:	Ø21mm x 126mm
Weight:	53g



230 LM



320mAh



IP64



2m drop

DLW-ATSOC2A012 20LM ADJUSTABLE PENLIGHT



20LM



2XAAA



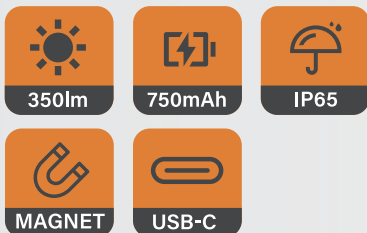
IP64



2m drop



Light source:	1 x 5mm Nichia White LED
Lumen:	20lm
Battery:	2 x 1.5V AAA Durachell Alkaline Batteries (include)
Mode:	on-off
Runtime:	23h
Dimension:	Ø18mm x 139mm
IP64; 2m drop	

DLW-F105**350LM PENLIGHT WITH MAGNET**

Light source:	SMD
Lumen:	350lm-50lm
Battery:	3.7V 750mAh
Mode:	High- Low- OFF
Runtime:	2h- 8h
Charging time:	2.5h
Charging Port:	USB-C
Dimension:	φ19*φ17*161.5mm

**DLW-F186****1000LM PENLIGHT WITH MAGNET**

Light source:	SMD
Lumen:	1000lm-600lm-100lm
Battery:	3.6V 2600mAh
Mode:	High- Mid-Low- OFF
Runtime:	3h- 4.5h- 14h
Charging time:	2.5h
Charging Port:	USB-C
Dimension:	φ30*φ27*160.5mm



DLW-6606 360LM PENLIGHT WITH MAGNET

- 360 LM
- 1800mAh
- IPX4
- magnet
- IK07
- USB-C



Light source:	COB
Lumen:	High 360lm -Low 180lm
Battery:	3.7V 1800mAh
Mode:	High - Low-Strobe-OFF
Runtime:	High3,5h-Low8h
Charging time:	4h
Dimension:	249x32,5x10,5mm

DLW-7795 300LM PENLIGHT WITH MAGNET

- 300 LM
- 500mAh
- IPX2
- magnet
- IK07
- USB-C

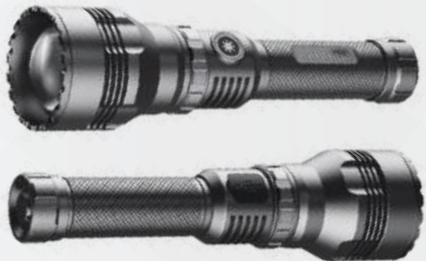


Light source:	COB+SMD
Lumen:	SMD 100lm-COB Low100lm-High300lm
Battery:	3,7V 500mAh
Mode:	SMD - COB Low - High - OFF
Runtime:	SMD 5h - COB Low5h-High1,5h
Charging time:	2,5h
Dimension:	15,8*20*135mm



DLW-7821 1000LM FLASHLIGHT

- 1000 LM
- 4000mAh
- IPX7
- IK07
- USB-C



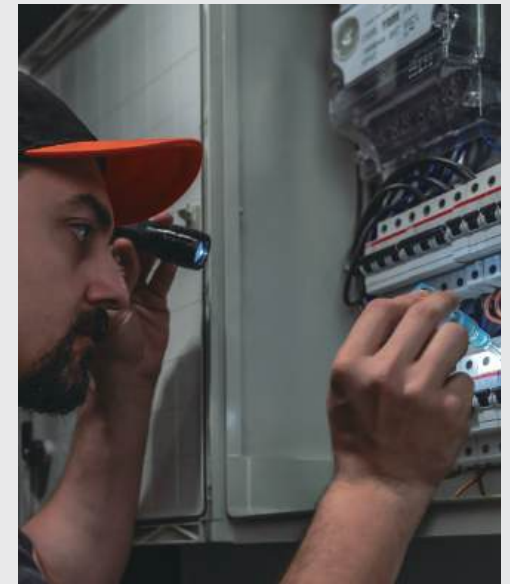
Light source:	SMD
Lumen:	(Turbo)1000lm -(High)600lm- (Mid)300lm -(Low)30lm
Battery:	3,65V 4000mAh
Mode:	High - Mid - Low - OFF Turbo - OFF
Runtime:	Turbo30s - High3h - Mid 6h - Low 60h
Charging time:	3 - 3,5h
Dimension:	φ53*φ31*192,6mm

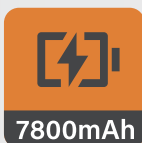
DLW-6771 500LM POCKET WORKLIGHT

- 500 LM
- 1500mAh
- IPX4
- IK07
- USB-C

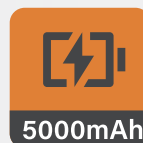
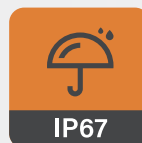


Light source:	SMD+COB
Lumen:	(SMD) Low 200lm-High 600lm-Turbo 750lm (COB) Low120lm-High 350lm-Turbo500lm
Battery:	3,7V 1500mAh
Mode:	(SMD)Low-High-OFF, (COB)Low-High-Red-OFF
Runtime:	Runtime: (SMD) Low 4,5h - High 1,5h - Turbo 30s (COB) Low4,5h-High 1,5h-Red15h-Turbo 30s
Charging time:	Charging time: 2,5h
Dimension:	140*32*22mm



DLW-ATOHCIN002**14000LM MULTIFUNCTIONAL FLASHLIGHT**

Light source:	4 x XHP Cree White LEDs
Lumen:	Lumen: High 6300lm - Mid 1900lm - Low 610lm - Eco 125lm - Turbo 14000lm
Battery:	7.4V 7800mAh Li-ion
Mode:	Front switch: on-off Mode Selection Ring: LOCK OUT - MED - HI - TURBO - 8Hz FLASH - ECO- LOW
Runtime:	High 3.5h-Mid 7h-Low 22h-Turbo 3h - eco 102h - flash 15h
Charging time	9h
Charging port:	DC12V 1A
Dimension:	Ø95mm x 273mm
Weight:	1335g

DLW-ATOHCIN003**10000LM MULTIFUNCTIONAL FLASHLIGHT**

Light source:	4 x XHP Cree White LEDs
Lumen:	High 5000lm - Mid 1500lm - Low 500lm - Eco 150lm - Turbo 10000lm
Battery:	7.4V 5000mAh
Mode:	Mode: Front switch: on-off Mode Selection Ring: LOCK OUT - MED - HI - TURBO - 8Hz FLASH - ECO- LOW
Runtime:	High 2.5h-Mid 3.3h-Low 7.5h-Turbo 2h - eco 30h - flash 15
Charging time:	7h
Charging port:	DC12V 1A
Dimension:	Ø95mm x 256mm
Weight:	940g

DLW-ATOHCIN001 3500LM MULTIFUNCTIONAL FLASHLIGHT



Light source:	1 x XHP Cree White LED
Lumen:	High 1500lm - Mid 500lm - Low 100lm - Turbo 3500lm
Battery:	7.4V 2600mAh
Mode:	Turbo-High-Mid-Low-off-long press for flash
Runtime:	High 3h-Mid 8h-Low 40h-Turbo 2h - flash 8h
Charging time:	6h
Charging port:	DC12V 1A
Dimension:	Ø62mm x 247mm
Weight:	545g



DLW-ATOHCIN004 3000LM MULTIFUNCTIONAL FLASHLIGHT

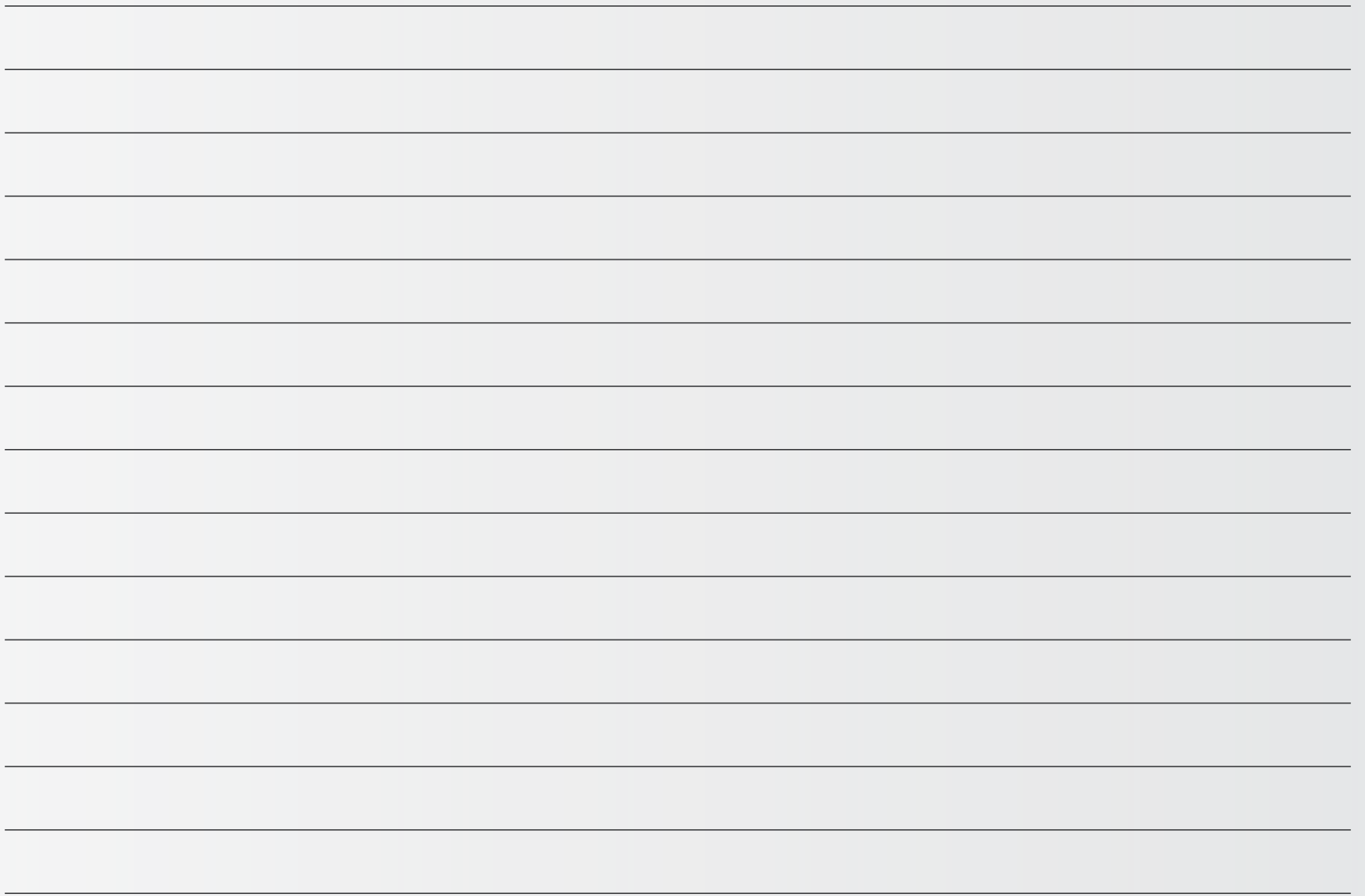
- Light source: 1 x XHP Cree White LED
- Lumen: High 1000lm - Mid 500lm - Low 100lm - Turbo 3000lm
- Battery: 3.7V 5000mAh
- Mode: Turbo-High-Mid-Low-off-long press for flash
- Runtime: High 2.5h-Mid 4h-Low 25h-Turbo 1.5h - flash 8h
- Charging time: 6h
- Charging port: DC12V 1A
- IP67; 1m drop
- Dimension: Ø62mm x 172mm
- Weight: 440g



DLW-ATOHCIN006 1100LM MULTIFUNCTIONAL FLASHLIGHT

- Light source: 1 x XP-L HI Cree White LED
- Lumen: High 600lm - Mid 350lm - Low 100lm - Turbo 1100lm
- Battery: 7.4V 2600mAh
- Mode: Turbo-High-Mid-Low-off-long press for flash
- Runtime: High 8h-Mid 13h-Low 26h-Turbo 1.5h - flash 8h
- Charging time: 4h
- Charging port: DC12V 1A
- IP67; 1m drop
- Dimension: Ø90mm x 265mm
- Weight: 835g







DLW
Industrietechnik
GmbH

Looking for distributer parterner!

Kastellstraße 33
47546 Kalkar Germany
dlw-group.com

sales@dlw-group.com